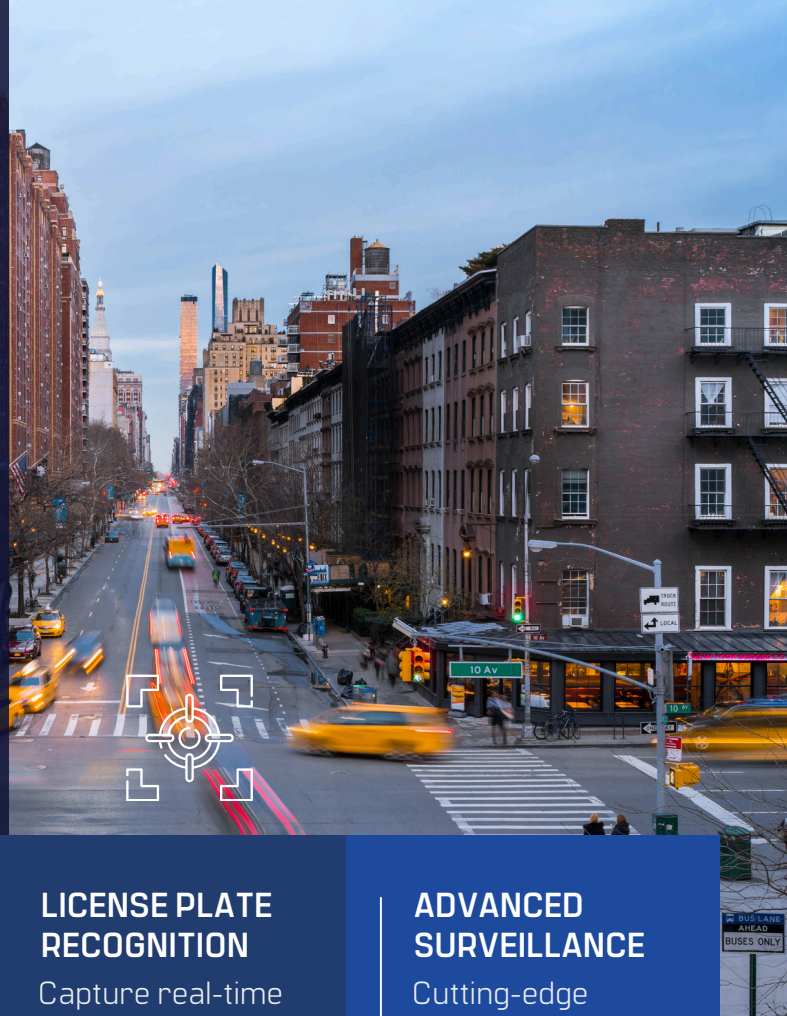


# VETTED COVERT SOLUTIONS

GATHER LPR OR VIDEO SURVEILLANCE DATA SIMPLY AND DISCREETLY



## DISCREET DESIGN

Seamlessly blends into any surrounding environment

## READY TO DEPLOY

Quick installation for short or long term deployments

## LICENSE PLATE RECOGNITION

Capture real-time vehicle data for advanced analytics

## ADVANCED SURVEILLANCE

Cutting-edge technology for real-time monitoring

Vetted Security Solutions' Covert Kits are purpose-built with a stealthy, low-profile design that integrates seamlessly into virtually any environment, enabling discreet and undetectable operation. Engineered for reliability and concealment, these systems maintain full functionality while remaining out of view.

Equipped with advanced license plate recognition and high-performance surveillance capabilities, the kits deliver real-time intelligence without compromising cover. This makes them an ideal tool for law enforcement, security teams, and investigative operations requiring silent, unobtrusive data collection.

**SCAN**  
CAPTURE - ANALYZE - SOLVE

## VETTED COVERT SOLUTIONS

- Discrete design
- Advanced optics
- Video & data intelligence
- System health monitoring

Contact Vetted today to explore how our Covert Solutions can help your agency drive investigative success through analytics.

# VETTED COVERT SOLUTIONS

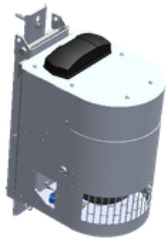
Vetted's Covert 5G Enclosure Solutions provide discreet, high-performance surveillance and ALPR capability in a compact enclosure designed to blend seamlessly into urban and suburban environments. Featuring flexible camera configurations, optional fixed sensors for expanded coverage, and simplified service access, these enclosures deliver reliable situational awareness without drawing attention.

## 2026 Updated Improvements

The updated Vetted Covert 5G Enclosure introduces a more compact, modernized design with improved serviceability and expanded configuration flexibility. Enhancements include a new D-shaped enclosure with a curved cam-latch access door, a swappable mesh screen for optimized PTZ concealment or visibility, and an accessible electronics panel for easier maintenance. The system now supports optional fixed sensors for additional viewing angles, dual PTZ camera configurations, expanded modem compatibility, quick-release pole mounting, and multiple exterior color options for improved covert deployment.

## VETTED COVERT 5G ENCLOSURE

The Vetted Covert 5G Single Camera Enclosure delivers covert surveillance and ALPR capability with a high-performance PTZ camera housed inside a compact 5G-style enclosure. Designed for quick deployment and simplified servicing, it provides a discreet solution for agencies needing reliable monitoring and plate capture in a streamlined footprint.



### Vetted Covert 5G Enclosure - Single Camera

VH-CVRT-5G2

#### Enclosure

5G Antenna Covert Enclosure

#### Power

120/240AC auto-switching power supply

#### Camera

(1) Axis 6358-LE PTZ camera

(see upgrades for alternative camera options.

Additional charges may apply)

Supports 1, 2, or 3 additional Axis F7255-RE Pinhole

Sensors (see upgrades for options)

#### Processor

Intel NUC PC Processor

#### Connectivity

Sierra Wireless Airlink RV55 (SIM not included)

See upgrades for additional modem options

#### Mounting

Quick-release pole mount

#### Design

- Swappable mesh screen for PTZ camera(s)
- Access door with cam latch
- Accessible electronics panel for quick component removal during service (excluding the F-series sensors and connectors)
- External color options available

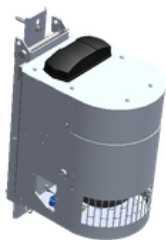
#### System Health Monitoring

TechAlert App with system health monitoring software and perpetual software license

*Requires: (1) LinC LPR license – Edge processing for on premise LPR server (sold separately; see LPR Licensing & Fees)*

## VETTED COVERT DUAL CAMERA 5G ENCLOSURE

The Vetted Covert Dual Camera 5G Enclosure provides bi-directional surveillance and ALPR performance through a dual PTZ configuration in a compact covert housing. Built for enhanced roadway coverage and operational flexibility, it supports multiple camera options and delivers expanded visibility while maintaining a low-profile, covert appearance.



### Vetted Covert 5G Enclosure - Dual Camera

VH-CVRT-5G2-2C

#### Enclosure

5G Antenna Covert Enclosure

#### Power

120/240AC auto-switching power supply

#### Camera

(2) Axis 6358-LE PTZ cameras

(see upgrades for alternative camera options.

Additional charges may apply)

Supports 1 or 2 additional Axis F7255-RE Pinhole

Sensors (see upgrades for options)

#### Processor

Intel NUC PC Processor

#### Connectivity

Sierra Wireless Airlink RV55 (SIM not included)

See upgrades for additional modem options

#### Mounting

Quick-release pole mount

#### Design

- Swappable mesh screen for PTZ camera(s)
- Access door with cam latch
- Accessible electronics panel for quick component removal during service (excluding the F-series sensors and connectors)
- External color options available

#### System Health Monitoring

TechAlert App with system health monitoring software and perpetual software license

*Requires: (1) LinC LPR license – Edge processing for on premise LPR server (sold separately; see LPR Licensing & Fees)*

# VETTED COVERT SOLUTIONS (continued)

## VETTED COVERT UTILITY ENCLOSURE 850NM

The Vetted Covert Utility Enclosure 850nm is a high-performance LPR system featuring an LPR camera in a discreet, utility box-style enclosure. Designed for unobtrusive deployment in urban and industrial environments, it blends seamlessly into surroundings for effective, low-profile monitoring.



### Vetted Covert Utility Enclosure - 850NM

VH-CVRT-UTLY2-850

#### Enclosure

Mini LPR Covert Enclosure

#### Camera & Imaging

Axis Q1728-Block Camera

- Single viewpoint with day/night capability
- 850nm IR illumination for low-light performance
- Monochrome capture only (no color image)

#### Design

Integrated shield for glare prevention and clearer imaging

*Requires: (1) LinC LPR license – Edge processing for on premise LPR server (sold separately; see LPR Licensing & Fees)*

#### Processor

Intel NUC PC Processor

#### Connectivity

4G Sierra Wireless

See upgrades for additional modem options (SIM card not included)

#### System Health Monitoring

TechAlert App with system health monitoring software and perpetual software license

## VETTED COVERT UTILITY ENCLOSURE 940NM

High-performance LPR system featuring an LPR camera in a discreet, utility box-style enclosure. Designed for unobtrusive deployment in urban and industrial environments, it blends seamlessly into surroundings for effective, low-profile monitoring.



### Vetted Covert Utility Enclosure - 940NM

VH-CVRT-UTLY2-940

#### Enclosure

Mini LPR Covert Enclosure

#### Camera & Imaging

Axis Q1728-Block Camera

- Single viewpoint with day/night capability
- 940nm IR illumination for low-light performance
- Monochrome capture only (no color image)

#### Design

Integrated shield for glare prevention and clearer imaging

*Requires: (1) LinC LPR license – Edge processing for on premise LPR server (sold separately; see LPR Licensing & Fees)*

#### Processor

Intel NUC PC Processor

#### Connectivity

4G Sierra Wireless

See upgrades for additional modem options (SIM card not included)

#### System Health Monitoring

TechAlert App with system health monitoring software and perpetual software license

## VETTED COVERT UTILITY ENCLOSURE - BLACK

High-performance PTZ camera system in a discreet, black utility box-style enclosure. Designed for unobtrusive deployment in urban and industrial environments, it blends seamlessly into surroundings for effective, low-profile monitoring.



### Vetted Covert Utility Enclosure - Black

VH-CVRT-UTLY-BLK

#### Enclosure

Mini LPR Covert Enclosure

#### Camera

Axis V5925 PTZ Network camera

Monochrome capture only (no color image)

#### Processor

Intel NUC PC Processor

#### Connectivity

4G Sierra Wireless modem (SIM card not included)

*Requires: (1) LinC LPR license – Edge processing for on premise LPR server (sold separately; see LPR Licensing & Fees)*

#### Design

- Optional windows on 3 sides of the enclosure
- IR transmissive glass

#### System Health Monitoring

Integrated TechAlert appliance, compatible with monitoring software. Includes one-year state/local license; federal requires subscription

## VETTED COVERT UTILITY ENCLOSURE - GREY

High-performance PTZ camera system in a discreet, grey utility box-style enclosure. Designed for unobtrusive deployment in urban and industrial environments, it blends seamlessly into surroundings for effective, low-profile monitoring.



### Vetted Covert Utility Enclosure - Grey

VH-CVRT-UTLY-GRY

#### Enclosure

Mini LPR Covert Enclosure

#### Camera

Axis V5925 PTZ Network camera

#### Processor

Intel NUC PC Processor

#### Connectivity

4G Sierra Wireless modem (SIM card not included)

*Requires: (1) LinC LPR license – Edge processing for on premise LPR server (sold separately; see LPR Licensing & Fees)*

#### Design

Grey enclosure with clear plastic material with mesh

#### System Health Monitoring

Integrated TechAlert appliance, compatible with monitoring software. Includes one-year state/local license; federal requires subscription

# VETTED COVERT SOLUTIONS (continued)

## VETTED COVERT ATTENUATOR

The Vetted Covert Attenuator is purpose-built for high-speed license plate capture in various environments. The discreet system is concealed within a structure styled as a standard highway attenuator. Designed for seamless roadway and industrial integration, it delivers reliable, unobtrusive traffic monitoring and enforcement.



### Vetted Covert Attenuator

VH-CVRT-ATN

#### Enclosure

Attenuator Main Unit

#### Power

(2) 50Ah 24VDC Heated Lithium Batteries in a 24VDC system, 100Ah total with Tycon web monitor, and Victron Smart Battery Charger

#### Processor

Ruggedized PC with Windows OS (Intel i7) and 500GB SSD for LPR. (LPR software license sold separately)

#### Connectivity

4G Sierra Wireless modem (SIM card not included)

#### Mounting

Camera mount location for a single LPR camera (camera not included)

#### System Health Monitoring

Integrated TechAlert appliance, compatible with monitoring software. Includes one-year state/local license; federal requires subscription

## VETTED COVERT EXOSKELETON

The Vetted Covert Exoskeleton is a high-speed LPR system with a low-profile design that supports user-supplied hides. Ideal for adaptable, covert deployments in dynamic or evolving surveillance environments.



### Vetted Covert Exoskeleton

VH-CVRT-EXO

#### Enclosure

Round Exoskeleton Main Unit (covert hide shell is not included)

#### Power

(2) 50Ah 24VDC Heated Lithium Batteries in a 24VDC system, 100Ah total with Tycon web monitor, and Victron Smart Battery Charger

#### Processor

Ruggedized PC with Windows OS (Intel i7) and 500GB SSD for LPR. (LPR software license sold separately)

#### Connectivity

4G Sierra Wireless modem (SIM card not included)

#### Mounting

Camera mount location for a single LPR camera (camera not included)

#### System Health Monitoring

Integrated TechAlert appliance, compatible with monitoring software. Includes one-year state/local license; federal requires subscription


# VETTED COVERT SOLUTIONS UPGRADES

## VETTED COVERT 5G ENCLOSURE MODEM UPGRADES

<b>Pepwave BR1 Mini - Covert 5G</b> VH-CVRT-5G2-BR1	Replaces the Sierra Wireless Airlink RV55 <ul style="list-style-type: none"> <li>Cellular Performance - 4G LTE (Cat 4/6/7 options) – up to 300 Mbps downlink</li> <li>SIM Configuration - Dual SIM (redundant) for carrier failover</li> </ul>	<ul style="list-style-type: none"> <li>Interfaces - 1x GE WAN/LAN, 2x GE LAN</li> <li>Operating Environment - -40°F to 149°F rugged temperature range</li> </ul>
<b>Digi IX10 - Covert 5G</b> VH-CVRT-5G2-IX10	Replaces the Sierra Wireless Airlink RV55 <ul style="list-style-type: none"> <li>Cellular Performance - 4G LTE (Cat 4/6) – global bands</li> <li>Interfaces - 1x Fast Ethernet (10/100), Serial (RS-232/485)</li> </ul>	<ul style="list-style-type: none"> <li>SIM Configuration - Dual SIM (redundant)</li> <li>Operating Environment - -40°F to 158°F rugged temperature range</li> </ul>
<b>Digi IX10 - Covert Utility</b> VH-CVRT-UTLY2-IX10	Replaces the Sierra Wireless Airlink RV55 <ul style="list-style-type: none"> <li>Cellular Performance - 4G LTE (Cat 4/6) – global bands</li> <li>Interfaces - 1x Fast Ethernet (10/100), Serial (RS-232/485)</li> </ul>	<ul style="list-style-type: none"> <li>SIM Configuration - Dual SIM (redundant)</li> <li>Operating Environment - -40°F to 158°F rugged temperature range</li> </ul>

## VETTED COVERT 5G ENCLOSURE CAMERA UPGRADES



<b>Axis Q6355-LE PTZ Camera - Covert 5G</b> VH-CVRT-5G2-6355	Replaces the Axis Q6358-LE PTZ camera 2 MP, 1080p, 31x optical zoom <ul style="list-style-type: none"> <li>Optimized IR illumination</li> <li>Forensic WDR - reduces visible noise and artifacts for maximal forensic usability</li> <li>Lightfinder- minimizes motion blur, even in near darkness</li> </ul>
 <b>Pinhole Camera</b> VH-CVRT-5G2-7225	Extremely discreet design <ul style="list-style-type: none"> <li>Up to 60 fps at 1080p and Up to 180 fps at 720p</li> <li>92° horizontal field of view</li> <li>Forensic WDR - reduces visible noise and artifacts for maximal forensic usability</li> </ul>

## VETTED COVERT ATTENUATOR AND EXOSKELETON BATTERY UPGRADES



<b>Vetted Covert Attenuator Battery Add On</b> VH-CVRT-ATN-BAT	The Vetted Covert Attenuator Battery Add-On adds 200Ah of extra capacity with four 50Ah 24VDC lithium batteries, configured for 24VDC systems to extend operational runtime.
<b>Vetted Covert Exoskeleton Battery Add On</b> VH-CVRT-EXO-BAT	The Vetted Covert Exoskeleton Battery Add-On adds 200Ah of extra capacity with four 50Ah 24VDC lithium batteries, configured for 24VDC systems to extend operational runtime.
<b>Vetted Covert Exo/Atn Extender Cable 25Ft</b> VH-CVRT-EXT25	Vetted Covert Exo/Atn Extender Cable 25ft is designed for power runs to Exoskeleton and Attenuator units
<b>Vetted Covert Exo/Atn Extender Cable 50Ft</b> VH-CVRT-EXT50	Vetted Covert Exo/Atn Extender Cable 50ft is designed for power runs to Exoskeleton and Attenuator units

## VETTED COVERT UPGRADES



<b>TechAlert Software</b> (Available for the Vetted Covert Attenuator and Exoskeleton) FMONT-SYSTEM	TechAlert is a secure, web-based platform for real-time monitoring of LPR, CCTV, and IoT devices. It tracks key metrics like power, battery, solar input, and connectivity, with alerts via email or SMS to reduce downtime and minimize on-site visits. <ul style="list-style-type: none"> <li>TechAlert software; single sensor perpetual license for on-premises system.</li> </ul>
<b>Solis Energy Light Tap 25FT</b> VH-LPT142-25FT	The Solis Energy Light Tap connects external devices to streetlights via existing photocell sockets. <ul style="list-style-type: none"> <li>25 ft cord</li> <li>Locking AC mains PCON cable connector</li> <li>Supports 85–305 VAC input</li> <li>10 A max current rating</li> <li>ANSI C136.41: 7-Pin Dimming Photocell Connector</li> <li>IP67 Twist-Lock Load Connector</li> </ul>